



Cable ID: Cable NEOLAN F/UTP indoor LSLTx () 4x2x23AWG cat6 CU

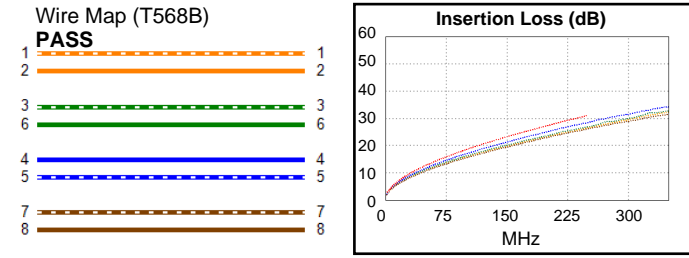
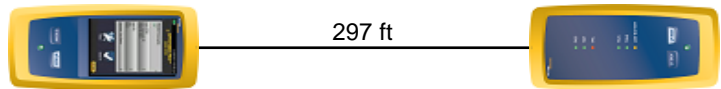
Test Summary: PASS

Test Limit: TIA Cat 6 Perm. Link
Limits Version: V7.10
Date / Time: 05/26/2026 05:30:52 AM
Operator: CHENGXIAOLAN
Headroom 3.0 dB (NEXT 3,6-7,8)
Cable Type: Cat 6 F/UTP
NVP: 70.0%

Main: Versiv
S/N: 2035009
Software Version: V6.12 Build 2
Calibration Date: 05/15/2025
Adapter: DSX-8000 (DSX-PLA804)
S/N: 20475125

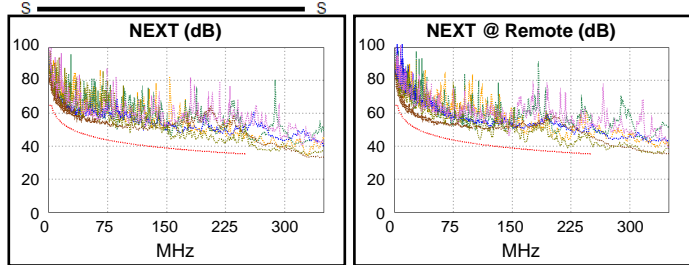
Remote: Versiv
S/N: 2034142
Software Version: V6.12 Build 2
Calibration Date: 05/15/2025
Adapter: DSX-8000R (DSX-PLA804)
S/N: 20485133

Length (ft), Limit 295	[Pair 7,8]	297
Prop. Delay (ns), Limit 498	[Pair 4,5]	467
Delay Skew (ns), Limit 44	[Pair 4,5]	36
Resistance (ohms)	[Pair 4,5]	13.52
Insertion Loss Margin (dB)	[Pair 4,5]	2.7
Frequency (MHz)	[Pair 4,5]	250.0
Limit (dB)	[Pair 4,5]	31.1

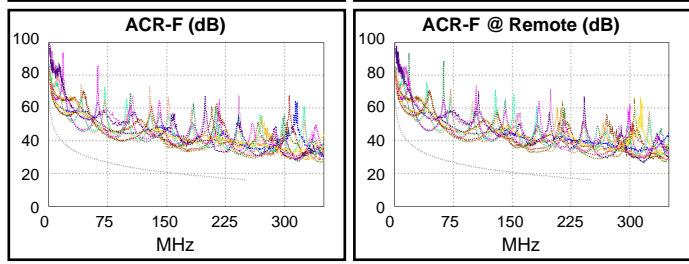


Worst Case Margin Worst Case Value

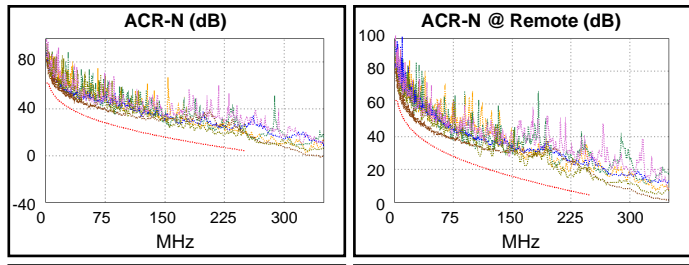
PASS	MAIN	SR	MAIN	SR
Worst Pair	3,6-7,8	3,6-7,8	3,6-7,8	3,6-7,8
NEXT (dB)	5.4	3.0	5.8	3.0
Freq. (MHz)	213.0	221.0	224.0	221.0
Limit (dB)	36.5	36.2	36.1	36.2
Worst Pair	3,6	3,6	3,6	3,6
PS NEXT (dB)	7.0	4.4	7.8	4.4
Freq. (MHz)	213.0	221.0	239.5	221.0
Limit (dB)	33.9	33.6	33.0	33.6



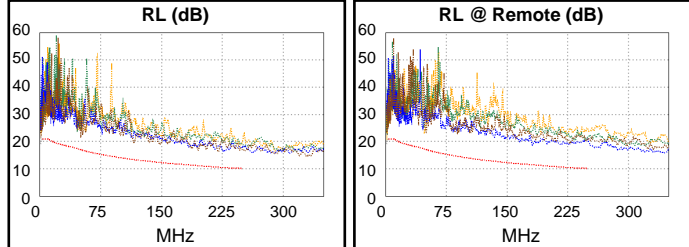
PASS	MAIN	SR	MAIN	SR
Worst Pair	3,6-4,5	3,6-4,5	3,6-4,5	3,6-4,5
ACR-F (dB)	13.7	13.4	14.3	13.9
Freq. (MHz)	176.0	176.0	250.0	250.0
Limit (dB)	19.3	19.3	16.2	16.2
Worst Pair	4,5	4,5	4,5	4,5
PS ACR-F (dB)	14.0	14.0	14.7	14.6
Freq. (MHz)	85.0	86.3	250.0	250.0
Limit (dB)	22.6	22.5	13.2	13.2



N/A	MAIN	SR	MAIN	SR
Worst Pair	3,6-4,5	3,6-7,8	3,6-7,8	3,6-7,8
ACR-N (dB)	7.9	6.4	11.5	7.5
Freq. (MHz)	8.6	109.0	240.5	221.0
Limit (dB)	53.7	21.8	5.2	7.3
Worst Pair	4,5	3,6	3,6	3,6
PS ACR-N (dB)	8.6	7.3	11.8	8.2
Freq. (MHz)	29.5	108.5	239.5	221.0
Limit (dB)	38.3	19.3	2.7	4.6



PASS	MAIN	SR	MAIN	SR
Worst Pair	7,8	1,2	4,5	4,5
RL (dB)	5.2	6.0	5.9	7.3
Freq. (MHz)	3.8	3.6	227.0	181.5
Limit (dB)	21.0	21.0	10.4	11.4



Compliant Network Standards:
 10BASE-T 100BASE-TX 100BASE-T4
 1000BASE-T 2.5GBASE-T 5GBASE-T
 ATM-25 ATM-51 ATM-155
 100VG-AnyLan TR-4 TR-16 Active
 TR-16 Passive