



Cable ID: Cable NEOLAN F/UTP indoor LSZH 4x2x0,5 cat 5e CU

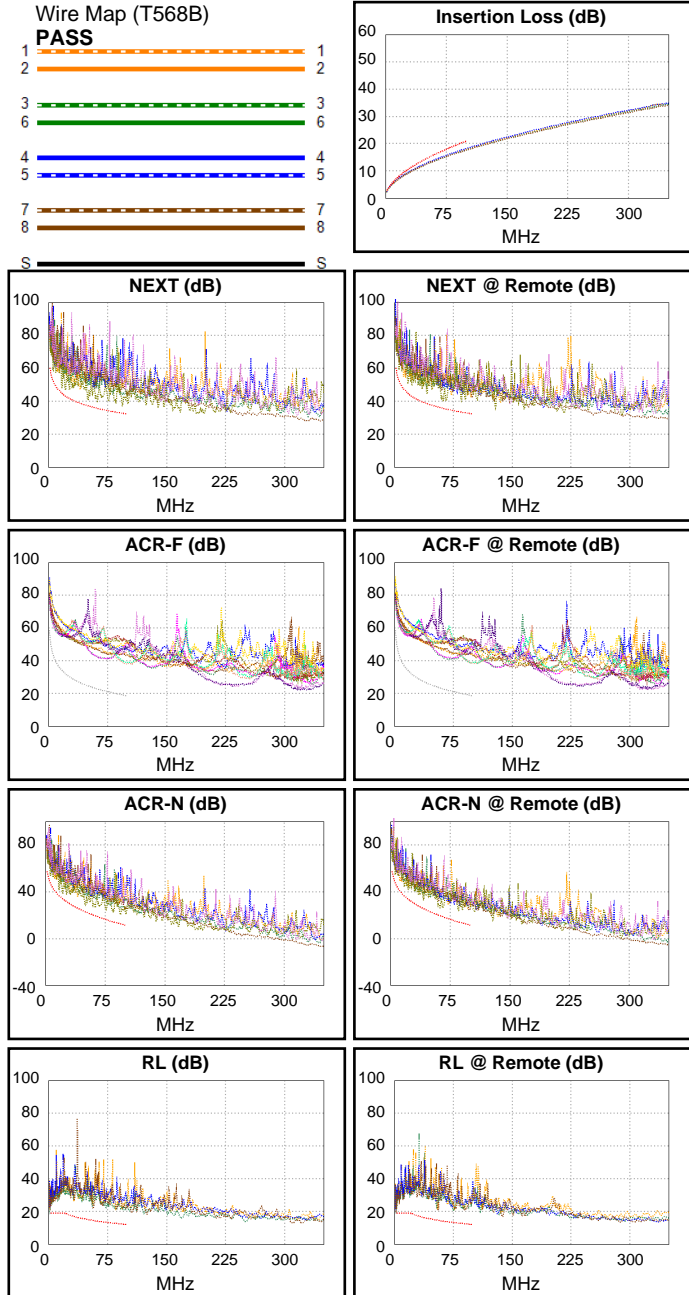
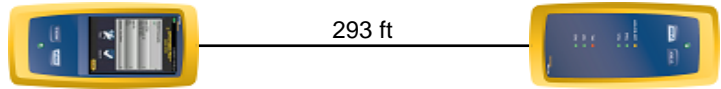
Test Summary: PASS

Test Limit: TIA Cat 5e Perm. Link
Limits Version: V7.10
Date / Time: 05/28/2026 01:25:29 AM
Operator: CHENGXIAOLAN
Headroom 3.5 dB (NEXT 3,6-7,8)
Cable Type: Cat 5e F/UTP
NVP: 69.0%

Main: Versiv
S/N: 2035009
Software Version: V6.12 Build 2
Calibration Date: 05/15/2025
Adapter: DSX-8000 (DSX-PLA804)
S/N: 20475125

Remote: Versiv
S/N: 2034142
Software Version: V6.12 Build 2
Calibration Date: 05/15/2025
Adapter: DSX-8000R (DSX-PLA804)
S/N: 20485133

Length (ft), Limit 295	[Pair 7,8]	293
Prop. Delay (ns), Limit 498	[Pair 4,5]	452
Delay Skew (ns), Limit 44	[Pair 4,5]	20
Resistance (ohms)	[Pair 3,6]	18.14
Insertion Loss Margin (dB)	[Pair 4,5]	2.8
Frequency (MHz)	[Pair 4,5]	100.0
Limit (dB)	[Pair 4,5]	21.0



Worst Case Margin Worst Case Value

PASS	MAIN	SR	MAIN	SR
Worst Pair	3,6-7,8	3,6-7,8	3,6-7,8	3,6-7,8
NEXT (dB)	3.5	4.2	4.6	4.2
Freq. (MHz)	50.0	62.0	93.8	62.0
Limit (dB)	37.2	35.7	32.8	35.7
Worst Pair	3,6	7,8	3,6	7,8
PS NEXT (dB)	6.1	6.7	7.3	8.6
Freq. (MHz)	50.0	62.0	93.8	85.3
Limit (dB)	34.2	32.7	29.8	30.4

PASS	MAIN	SR	MAIN	SR
Worst Pair	1,2-4,5	4,5-1,2	7,8-4,5	7,8-4,5
ACR-F (dB)	18.1	18.2	19.3	19.8
Freq. (MHz)	6.0	6.0	99.0	100.0
Limit (dB)	43.1	43.1	18.7	18.6
Worst Pair	4,5	4,5	4,5	7,8
PS ACR-F (dB)	17.4	17.6	21.8	21.8
Freq. (MHz)	3.1	1.1	99.0	95.8
Limit (dB)	45.7	54.6	15.7	16.0

N/A	MAIN	SR	MAIN	SR
Worst Pair	3,6-7,8	3,6-7,8	3,6-7,8	3,6-7,8
ACR-N (dB)	4.8	6.7	7.9	9.7
Freq. (MHz)	16.9	62.3	93.8	85.3
Limit (dB)	36.7	19.5	12.5	14.2
Worst Pair	3,6	3,6	3,6	4,5
PS ACR-N (dB)	7.4	9.0	10.5	13.1
Freq. (MHz)	16.9	5.6	93.8	98.5
Limit (dB)	33.7	44.8	9.5	8.6

PASS	MAIN	SR	MAIN	SR
Worst Pair	7,8	7,8	3,6	7,8
RL (dB)	4.0	3.7	8.5	5.9
Freq. (MHz)	2.8	2.8	97.8	55.5
Limit (dB)	19.0	19.0	12.1	14.6

Compliant Network Standards:
 10BASE-T 100BASE-TX 100BASE-T4
 1000BASE-T 2.5GBASE-T ATM-25
 ATM-51 ATM-155 100VG-AnyLan
 TR-4 TR-16 Active TR-16 Passive