



**Cable ID: Cable NEOLAN U/UTP indoor PVC 4x2x0,5 cat 5e CU**

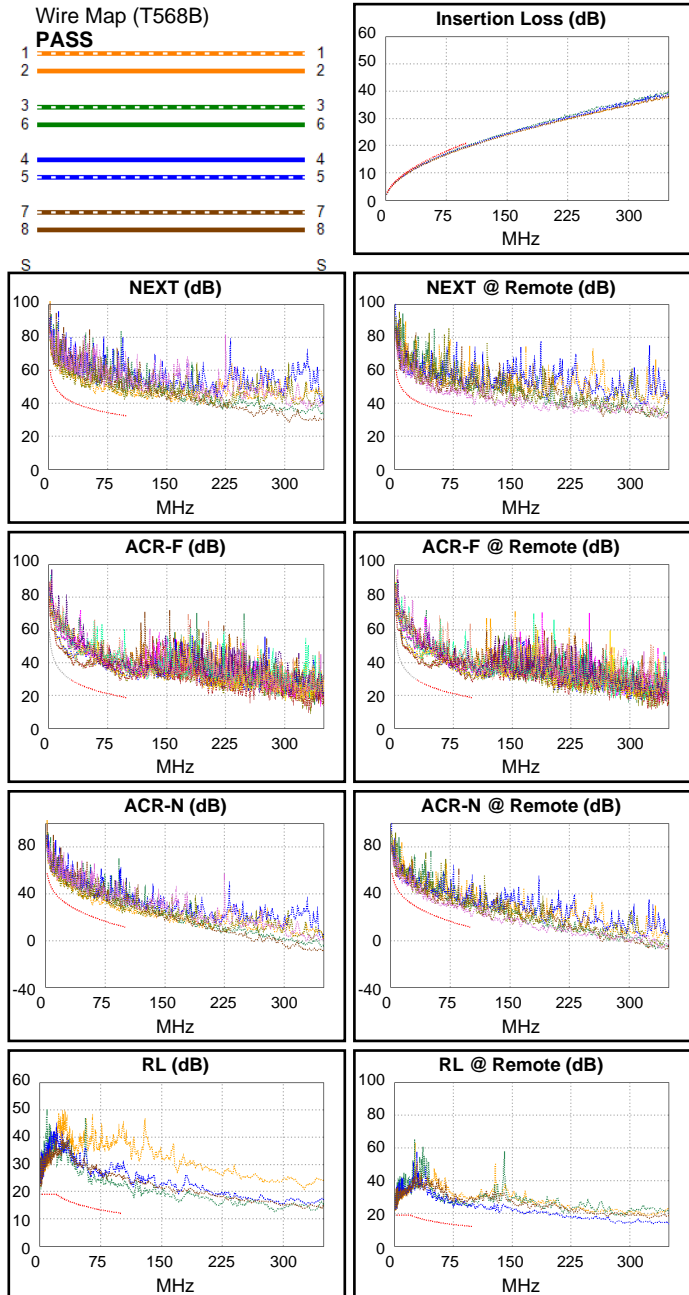
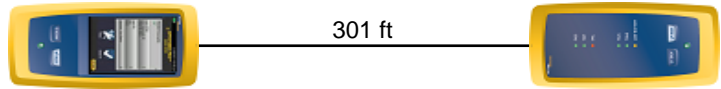
**Test Summary: PASS**

Test Limit: TIA Cat 5e Perm. Link  
Limits Version: V7.10  
Date / Time: 05/27/2026 04:37:03 AM  
Operator: CHENGXIAOLAN  
Headroom 9.0 dB (NEXT 4,5-7,8)  
Cable Type: Cat 5e U/UTP  
NVP: 69.0%

Main: Versiv  
S/N: 2035009  
Software Version: V6.12 Build 2  
Calibration Date: 05/15/2025  
Adapter: DSX-8000 (DSX-PLA804)  
S/N: 20475125

Remote: Versiv  
S/N: 2034142  
Software Version: V6.12 Build 2  
Calibration Date: 05/15/2025  
Adapter: DSX-8000R (DSX-PLA804)  
S/N: 20485133

Length (ft), Limit 295	[Pair 3,6]	301
Prop. Delay (ns), Limit 498	[Pair 1,2]	456
Delay Skew (ns), Limit 44	[Pair 1,2]	12
Resistance (ohms)	[Pair 1,2]	19.05
Insertion Loss Margin (dB)	[Pair 3,6]	1.2
Frequency (MHz)	[Pair 3,6]	100.0
Limit (dB)	[Pair 3,6]	21.0



Worst Case Margin Worst Case Value

PASS	MAIN	SR	MAIN	SR
Worst Pair	1,2-3,6	4,5-7,8	3,6-7,8	4,5-7,8
<b>NEXT (dB)</b>	9.6	9.0	10.0	10.4
Freq. (MHz)	59.0	45.3	96.3	96.5
Limit (dB)	36.1	37.9	32.6	32.6
Worst Pair	3,6	4,5	3,6	7,8
<b>PS NEXT (dB)</b>	10.8	10.0	11.3	11.4
Freq. (MHz)	46.3	46.3	96.3	100.0
Limit (dB)	34.8	34.8	29.6	29.3

PASS	MAIN	SR	MAIN	SR
Worst Pair	4,5-3,6	4,5-3,6	3,6-4,5	4,5-3,6
<b>ACR-F (dB)</b>	9.8	9.8	10.0	9.8
Freq. (MHz)	90.8	99.0	99.3	99.0
Limit (dB)	19.5	18.7	18.7	18.7
Worst Pair	4,5	4,5	4,5	3,6
<b>PS ACR-F (dB)</b>	11.5	11.8	11.5	12.2
Freq. (MHz)	99.5	90.8	99.5	98.8
Limit (dB)	15.7	16.5	15.7	15.7

N/A	MAIN	SR	MAIN	SR
Worst Pair	1,2-3,6	3,6-4,5	3,6-7,8	4,5-7,8
<b>ACR-N (dB)</b>	10.3	9.3	11.7	12.0
Freq. (MHz)	59.0	6.4	96.5	96.5
Limit (dB)	20.3	46.7	12.0	12.0
Worst Pair	3,6	4,5	3,6	7,8
<b>PS ACR-N (dB)</b>	11.3	10.7	12.4	13.1
Freq. (MHz)	46.3	46.3	96.3	100.0
Limit (dB)	21.0	21.0	9.0	8.3

PASS	MAIN	SR	MAIN	SR
Worst Pair	1,2	7,8	3,6	4,5
<b>RL (dB)</b>	4.9	5.1	9.6	11.8
Freq. (MHz)	2.6	2.6	95.8	97.8
Limit (dB)	19.0	19.0	12.2	12.1

Compliant Network Standards:  
 10BASE-T      100BASE-TX      100BASE-T4  
 1000BASE-T    2.5GBASE-T      ATM-25  
 ATM-51        ATM-155          100VG-AnyLan  
 TR-4          TR-16 Active     TR-16 Passive